

IYYUU AHTAAWIN MIYUPIMAATISIIUN PLANNING (IAMP)

Eeyou Istchee

General Assembly of Health & Social Services

Waskaganish

April 12, 2016

Sol Awashish

Darlene Shecapio-Blacksmith

Vision Statement on Health and Social Services

Declared on February 18, 1999 at the Special General Assembly held in Ouje-Bougoumou, the Cree Nation vision statement

IYYUU AHTAAWIN MIYUPIMAATISIIUN PLANNING

We have a lot of Health & Social Challenge in our communities and in Eeyou/Eenou Istchee

How did we get into this State of Situation?

“You will not know where
to go, if you don't know
where you came from. “

~Cree Elder~

The History of the Cree Nation

Healing/Resilience

Symptoms from our Past:
Social & Health Challenges;
Learnt Self Helplessness

JBNQA/Paix Brave

Modern Developments: Hydro,
Mining, Forestry, Exploration

European
Colonization
Fur Traders
Missionaries

Indian Act/ Affairs

Indian Residential
School

Assimilation

IYYUU AHTAAWIN MIYUPIMAATISIIUN PLANNING

Some Priorities Identified at Oct. 28–30 meeting:

- ▶ Housing
 - ▶ Substance abuse
 - ▶ Unemployment
 - ▶ Obesity/Diabetes
- ▶ Loss of Community Spirit
- ▶ Intergenerational Trauma
 - ▶ School Dropouts
- ▶ Family Dysfunction/Broken Homes

IYYUU AHTAAWIN MIYUPIMAATISIUN PLANNING

WE NEED TO DO SOMETHING DIFFERENT



THE IAMP IS A NEW APPROACH TO

- ▶ **Community involvement to identify its Social/Health Priorities & Developing an on-going Action Plan**

IYYUU AHTAAWIN MIYUPIMAATISIUN PLANNING

THE MEANING OF THE MISSION & MANDATE IN PRACTICAL TERMS

**EYUU ISTCHEE STRATEGIC PLAN
FOR MIYUPIMAATISIUN**
(based on community-identified miyupimaatisiun needs)

**REGIONAL WORK PLANS ALIGNED TO SUPPORT
COMMUNITY MIYUPIMAATISIUN PRIORITIES**



Council of
Chishaiyuu



COMMUNITY MIYUPIMAATISIUN 5-YEAR WORK PLANS

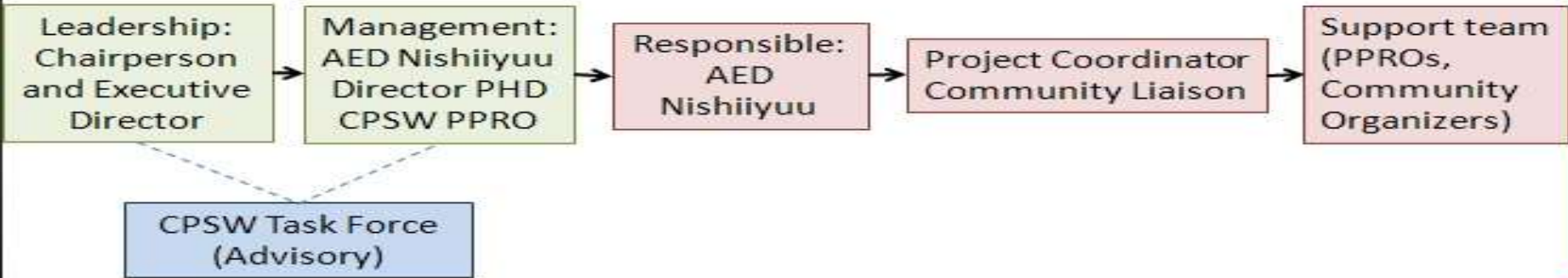


IYYUU AHTAAWIN MIYUPIMAATISIUN PLANNING

LEADERSHIP OF COMMUNITY PLANNING PROCESS



SUPPORTS TO THE IAMP



State of Situation:

- ▶ Every community has agreed to be a partner in the IAMP;
- ▶ All IAMP community teams have been identified and/or formed or in the process of being formed;
- ▶ Training process has been initiated in data collection, asset mapping and priority consensus work;

IYYUU AHTAAWIN MIYUPIMAATISIUN PLANNING

MEGWETCH!

