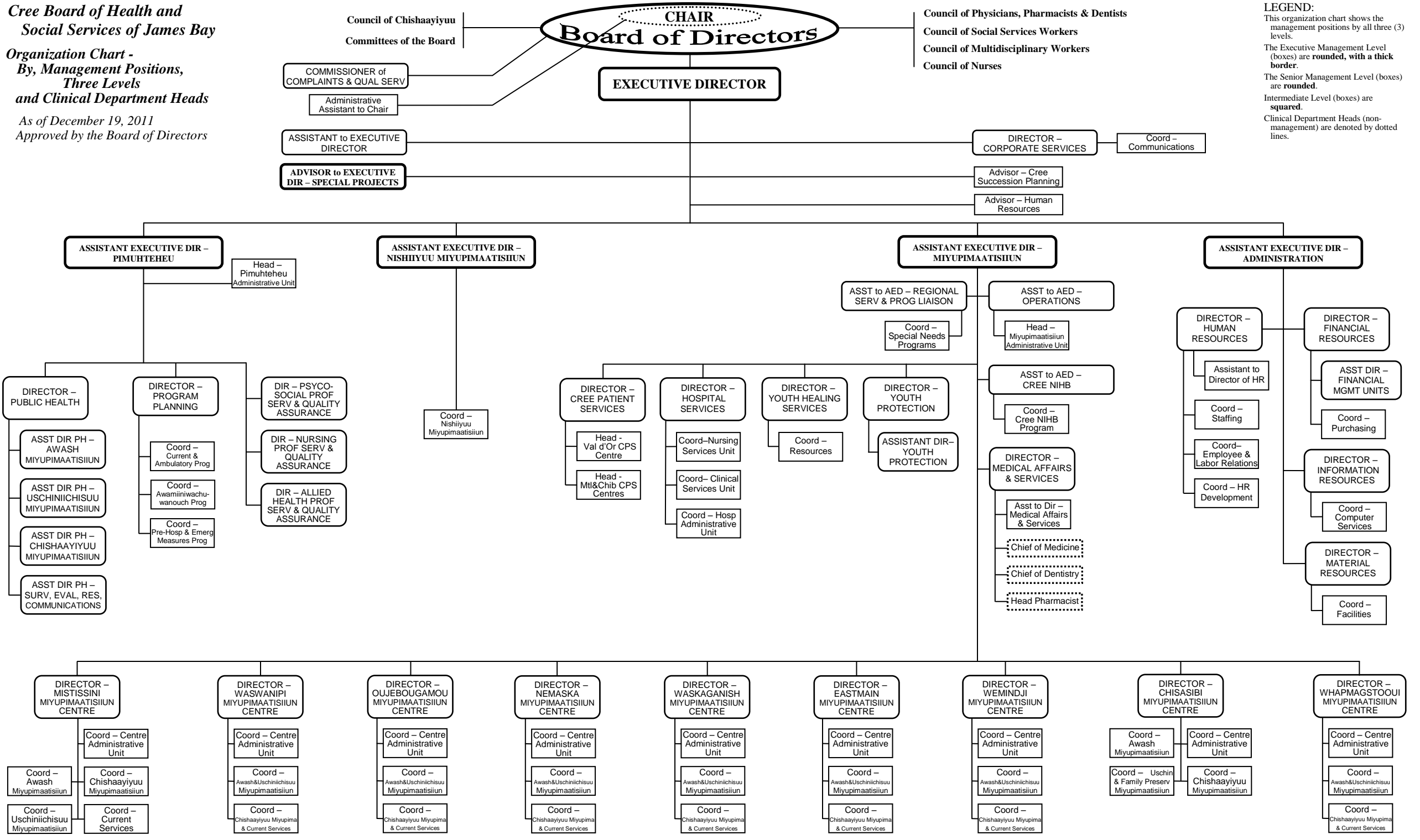


**Cree Board of Health and Social Services of James Bay**

**Organization Chart - By, Management Positions, Three Levels and Clinical Department Heads**

As of December 19, 2011  
Approved by the Board of Directors



**LEGEND:**  
This organization chart shows the management positions by all three (3) levels.  
The Executive Management Level (boxes) are rounded, with a thick border.  
The Senior Management Level (boxes) are rounded.  
Intermediate Level (boxes) are squared.  
Clinical Department Heads (non-management) are denoted by dotted lines.