



ᑭᑭᑦ ᑭᑭᑦ ᑭᑭᑦ ᑭᑭᑦ
CONSEIL CRI DE LA SANTÉ ET DES SERVICES SOCIAUX DE LA BAIE JAMES
CREE BOARD OF HEALTH AND SOCIAL SERVICES OF JAMES BAY

CALL FOR TENDER:
SERVICES FOR SNOW REMOVAL AND SPREADING SAND
CHISASIBI REGIONAL HOSPITAL
2025-2026 Winter

Chisasibi, Baie James, Nouveau-Québec – J0M 1E0 Tél.: (819) 855-2844



ᑭᑭᑦ ᑭᑭᑦ ᑭᑭᑦ ᑭᑭᑦ
CONSEIL CRI DE LA SANTÉ ET DES SERVICES SOCIAUX DE LA BAIE JAMES
CREE BOARD OF HEALTH AND SOCIAL SERVICES OF JAMES BAY

The Cree Board of Health and Social Services of James Bay is seeking quotations for winter maintenance work at the facilities of the Chisasibi Regional Hospital.

The work involves snow removal and the spreading of sand. The services we are looking for will be complementary to our actual equipment capacity.

The **contract is from November 15, 2025, to April 30, 2026 winter season.**

The list of sites identified to carry out the work is provided below in this document.

The Chisasibi Hospital premises plus the trailers behind the hospital will require clearing of snow on the premises and driveways for the safety of the staff and clientele.

Zones that are indicated in the map below, and the Contractor needs to have the snow cleared and removed by 7 a.m. on weekdays, weekends, and statutory holidays, and spread sand when required

Plie snow for easy accessibility for hauling and avoid piling the snow near the main road to eliminate the risk of accidents.

Provide services as soon as the snow reaches 2 inches on the ground, 24 hours a day.

The Contractor shall be the holder and maintain in effect during the total duration of the contract a third-party liability insurance policy of the minimum sum of 2 million dollars.

The contractor must submit a bid that includes:

- A loader operated to clear the snow or any equipment that can perform such a task.
- Dump truck operated to haul away the snow.
- Equipment that will be used for spreading sand.
- The description of the equipment and its capacity (bucket size for loaders and box size for hauling trucks) must be included with the quotation.
- Your hourly rates must include all costs, i.e., operator cost, fuel, maintenance, administration, and profit.
- No additional administration fees will be accepted on the invoices unless primarily approved by an order of change.

The quotation must be accompanied by a certificate of conformity with CNESST, the Quebec Ministry of Revenue, and proof of insurance for the activity of snow removal.

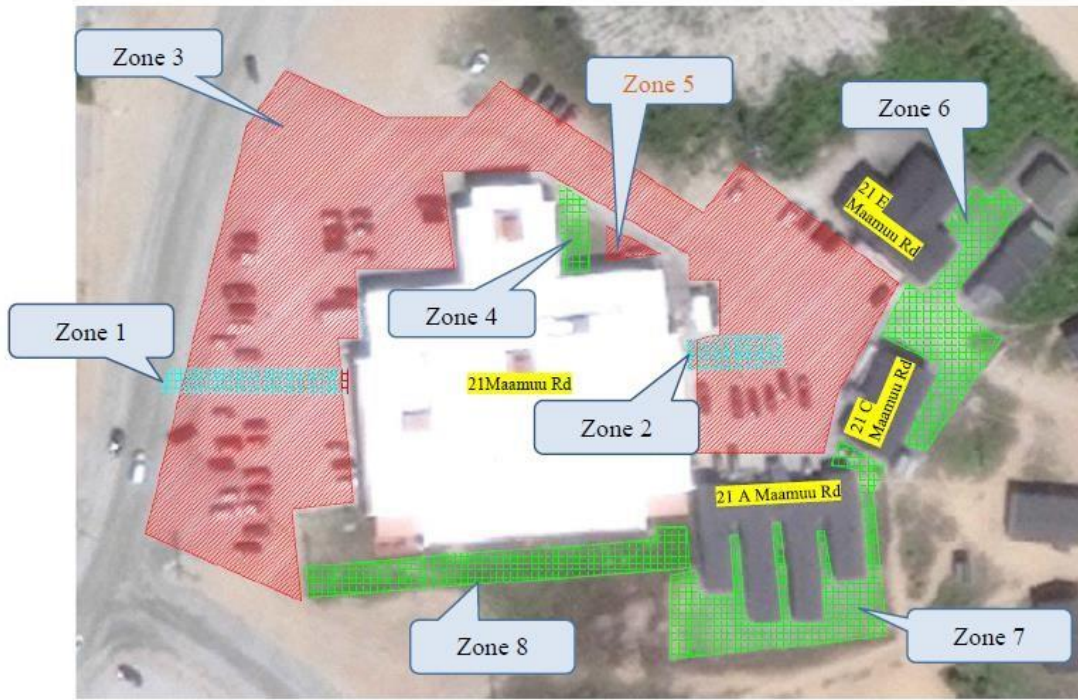
Your quotation must be received by November 12, 2025, at 3 PM at the Chisasibi Regional Hospital, located at the Administration office located at 21A Maamuu Rd, in a sealed envelope.

The Cree Board of Health and Social Services of James Bay reserves the right to cancel this tender if it receives only one bid.

The hospital reserves the right to reject any bid that is substantially higher than the estimated budget.



ᑕᑦᑭᑦ ᑕᑦᑭᑦ ᑕᑦᑭᑦ ᑕᑦᑭᑦ
CONSEIL CRI DE LA SANTÉ ET DES SERVICES SOCIAUX DE LA BAIE JAMES
CREE BOARD OF HEALTH AND SOCIAL SERVICES OF JAMES BAY



Priority 1

Zone 1: Ambulance Bay Area,

Zone 2: Receiving (Loading Dock) and Back Exit Door

Zone 3: Front Parking and Main Entrance, Exit Door, and Clinic Exit Door

Zone 4: Server Room Ventilation and Cafeteria Window

Zone 5: Fire Sprinkler Booster Inlet

Priority 2

Zone 6: Sides and behind 21C & 21E Maamuu Rd

Zone 7: Around 21 A Maamuu Rd

Zone 8: Medicine Exit Doors, south side of the hospital (inside the fence to maintain a clean path in case of evacuation)

Chisasibi, Baie James, Nouveau-Québec – J0M 1E0 Tél.: (819) 855-2844