



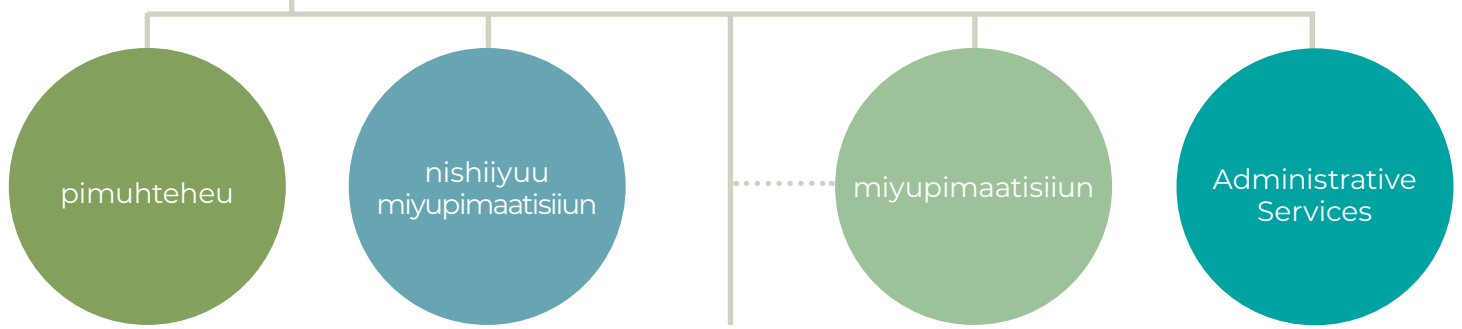
aatiskaatuuhch aapitisiisuwiiyich



- Council of Physicians, Dentists and Pharmacists
- Council of Nurses
- Service Quality and Complaints Commissioner



- Corporate Services
- Organizational Development and Strategy



- pimuchtehu**
- Pre-hospital Emergency Services and Emergency Measures
 - Youth Healing Services
 - Group Homes
 - Youth Protection
 - Program Development and Support
 - Maanuuhiikuu
 - Disability Programs/ Special Needs
 - Midwifery Services
 - Public Health
 - Awash (0-9 yrs)
 - Uschiniichisuu (10-29 yrs)
 - Chishaayiyuu (30+ yrs)
 - SERC (Surveillance, Evaluation, Research, Communications)

- nishiiyuu miyupimaatisiun**
- Organizational Quality and Cultural Safety
 - Evaluation and Accreditation
 - Community Development
 - Client Experience and Organizational Performance
 - Complementary Services and Programs

- Medical Affairs and Services**
- Medicine
 - Dentistry
 - Pharmacy

- miyupimaatisiun**
- Health (Nursing)
 - Psychosocial
 - Foster Homes
 - Allied Health
 - Chisasibi Hospital
 - Clinical Services
 - Nursing Services
 - Specialized Services
 - Administration
 - Community Miyupimaatisiun Centres
 - Chisasibi
 - Eastmain
 - Mistissini
 - Nemaska
 - Oujé-Bougoumou
 - Waskaganish
 - Waswanipi
 - Wemindji
 - Whapmagoostui

- Administrative Services**
- Human Resources
 - Financial Resources
 - Information Technology
 - Material Resources
 - Wiichihiituwinn