



Cree Board of Health and Social Services James Bay

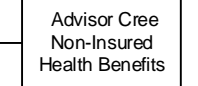
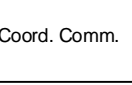
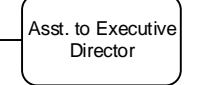
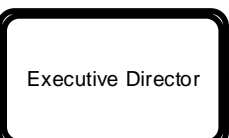
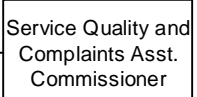
Organizational Structure – Without Names

Approved by Board of Directors on September 20, 2018

Updated: September 21, 2018

Councils of the Board

Committees of the Board



LEGEND

- The organizational chart shows management positions by all three (3) levels.
- The Executive Management level positions are rounded with a thick border.
- The Senior Management level positions are rounded.
- The Intermediate Management level positions are squared.
- Clinical Department Heads or Medical Directors (non-management) are denoted by small dotted lines.
- The solid lines represent a hierarchical relationship.
- The large dashed lines represent an additional functional relationship.
- The parentheses (...) indicate that the position is vacant and the individual is appointed on an interim basis.

